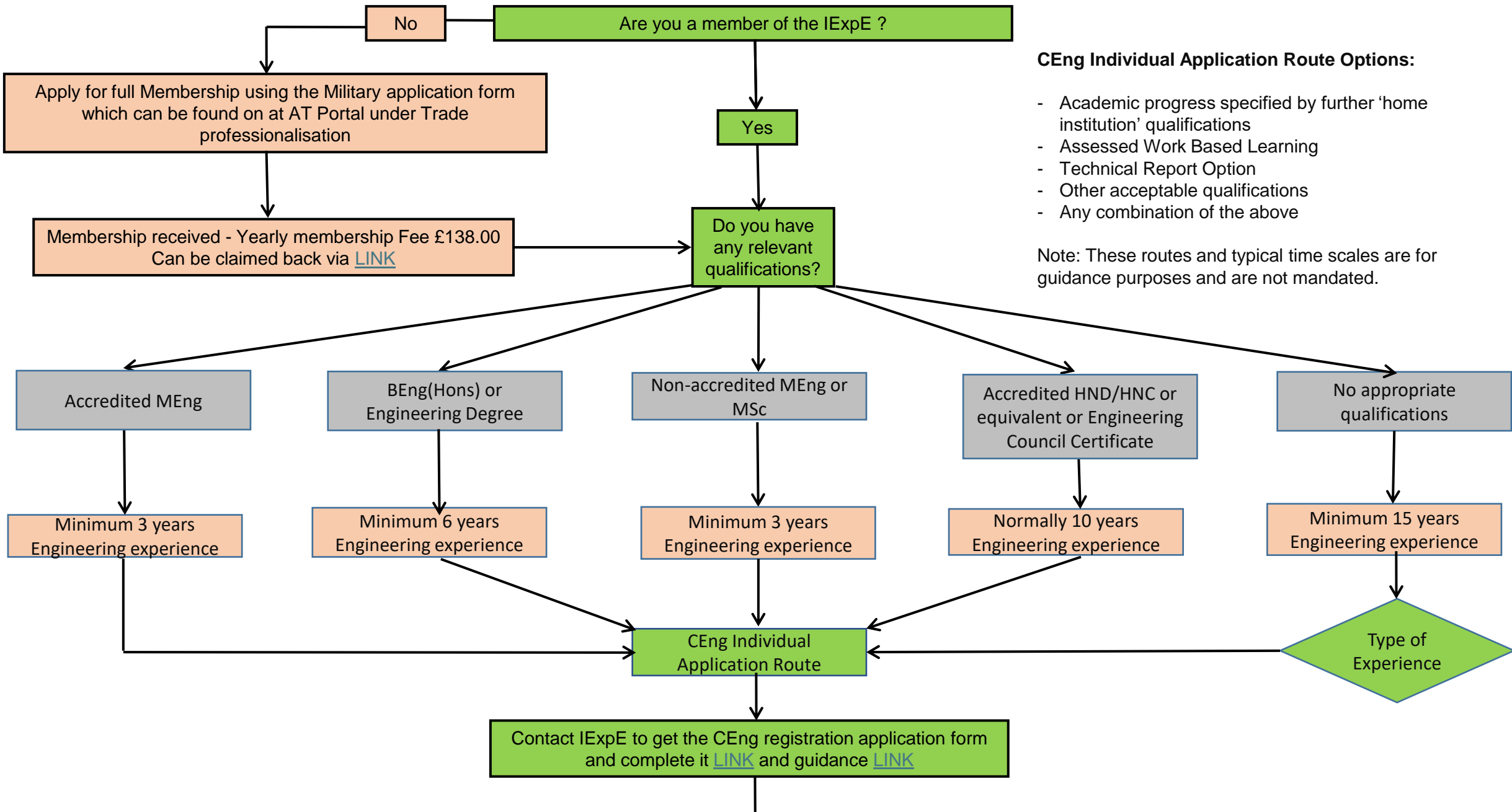


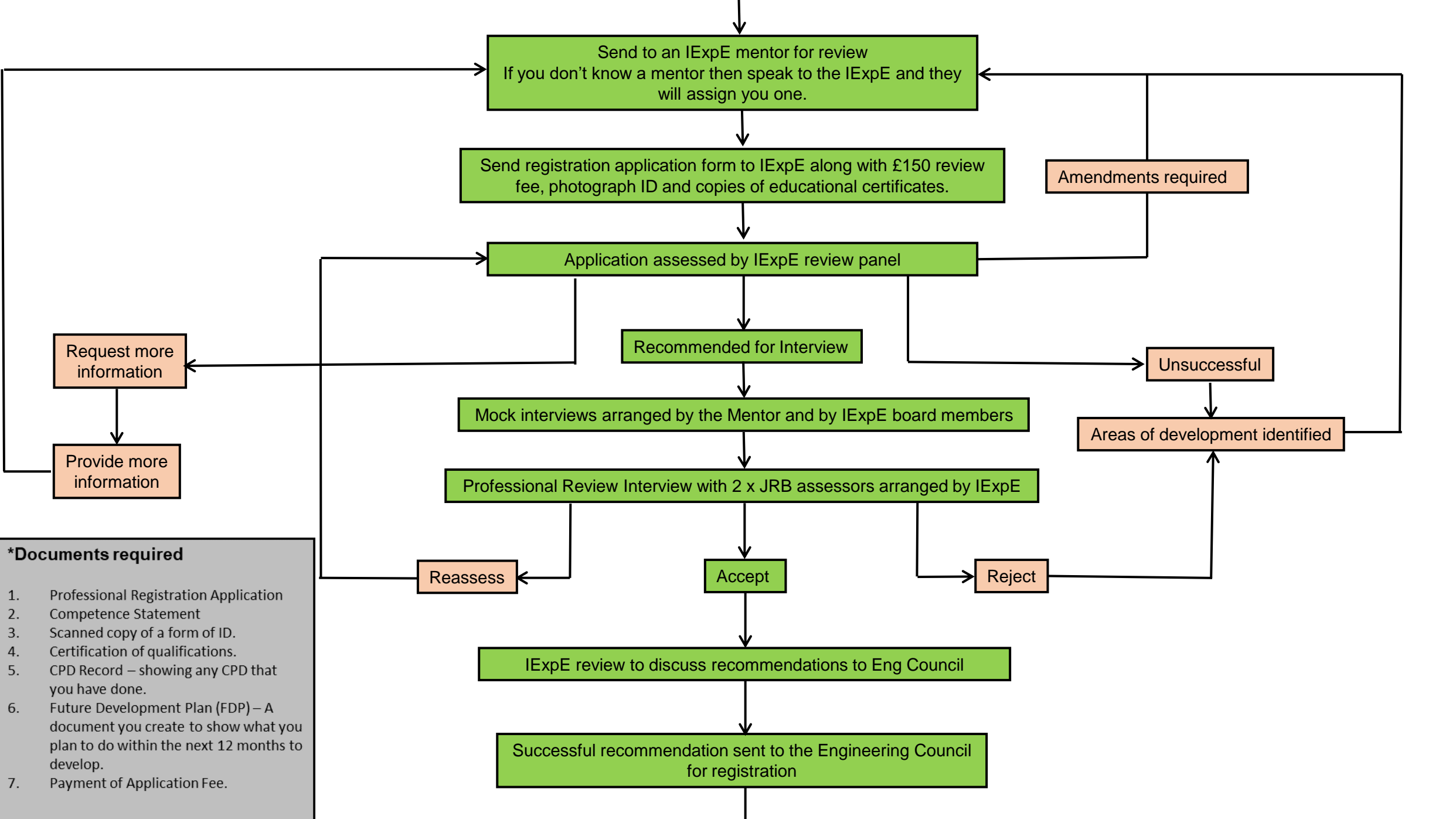
Route to CEng Professional Registration and EPRA Payment in accordance with CATO Tech Inst 10 [LINK](#)



CEng Individual Application Route Options:

- Academic progress specified by further 'home institution' qualifications
- Assessed Work Based Learning
- Technical Report Option
- Other acceptable qualifications
- Any combination of the above

Note: These routes and typical time scales are for guidance purposes and are not mandated.



Request more information

Provide more information

- *Documents required**
1. Professional Registration Application
 2. Competence Statement
 3. Scanned copy of a form of ID.
 4. Certification of qualifications.
 5. CPD Record – showing any CPD that you have done.
 6. Future Development Plan (FDP) – A document you create to show what you plan to do within the next 12 months to develop.
 7. Payment of Application Fee.

Send to an IExpE mentor for review
If you don't know a mentor then speak to the IExpE and they will assign you one.

Send registration application form to IExpE along with £150 review fee, photograph ID and copies of educational certificates.

Amendments required

Application assessed by IExpE review panel

Recommended for Interview

Unsuccessful

Mock interviews arranged by the Mentor and by IExpE board members

Areas of development identified

Professional Review Interview with 2 x JRB assessors arranged by IExpE

Reassess

Accept

Reject

IExpE review to discuss recommendations to Eng Council

Successful recommendation sent to the Engineering Council for registration

